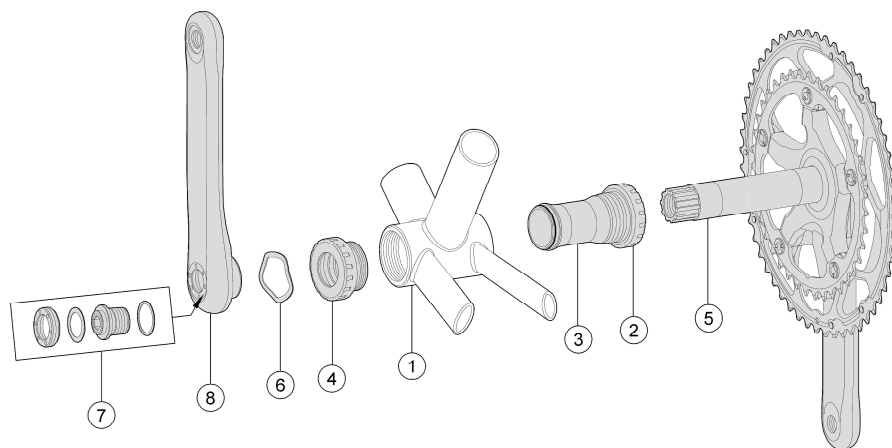


## BB-8200 / BB-8681 MegaExo Crankset Installation Instructions

Published – Apr, 2011. ZS077.v6 © Full Speed Ahead



### Introduction

Congratulations on your Full Speed Ahead product. Please read these instructions and follow them for correct use. Failure to follow the warnings and instructions could result in damage to product not covered under warranty, damage to bicycle; or cause an accident resulting in injury or death. Since specific tools and experience are necessary for proper installation, it is recommended that the product be installed by a qualified bicycle technician. FSA & Vision assumes no responsibility for damages or injury related to improperly installed components.

### Warranty

Full Speed Ahead (FSA) warrants all FSA, Gravity, Vision, Metropolis and RPM products to be free from defects in materials or workmanship for a period of two years after original purchase unless otherwise stated in the full warranty policy. The warranty is non-transferable and valid to the original purchaser of the product only. Any attempt to modify the product in any way such as drilling, grinding, and painting will void the warranty. For more information on warranty policy and instructions for completing a warranty claim, check out the Full Warranty Policy found at our website: <http://www.fullspeedahead.com/techdoc>

### Specification

Item Number / Model Name	<b>BB-8200 / MegaExo Ceramic Bearing BB for K-Force Light</b>
BB Shell	68mm English (BC1.37") or 70mm Italian (M36)
Item Number / Model Name	<b>BB-8681 / MegaExo Steel Bearing BB for SL-K Light</b>
BB Shell	68mm English (BC1.37") or 70mm Italian (M36)

### Components

Follow the assembly order in the illustration:

- |                             |                                      |
|-----------------------------|--------------------------------------|
| ① Bottom Bracket (BB) Shell | ⑥ Wave Washer x1                     |
| ② Right BB Cup x1           | ⑦ QR-14 SELF-EXT. CRANK BOLT         |
| ③ Center Sleeve x1          | M27 x 1.0P x 7.5 & M17 Crank Bolt x1 |
| ④ Left BB Cup x1            | ⑧ Left Crank Arm x1                  |
| ⑤ Right Crank Arm x1        |                                      |

### Crankset Installation

- Ensure that the BB shell ① threads are clean from machining chips, dirt, dust, etc.
- Install the R. Bearing Cup ② and Center Sleeve ③. Tighten the cup to 400-500 kgf.cm / 40-50 Nm / 355-445 in.lbs. (Use FSA MegaExo cup tool, part no. E0139).
- Install the L. Bearing Cup ④. Tighten the cup to 400-500 kgf.cm / 40-50 Nm / 355-445 in.lbs.
- Apply grease to the machined surfaces of the spindle that will contact the bearings after crank installation, gently insert the R. Crank ⑤ through the R. and L. Bearing Cup.
- CAUTION** Take care not to damage the plastic cover of right BB cup ① during R. Crank installation. Lightly grease the plastic cover of BB cups to ease installation.
- Apply light amount of grease on spindle splines of R. Crank. Install the Wave Washer ⑥ onto the axle.
- Install L. Crank Arm ⑧ onto the axle (QR-14 self-extracting crank bolt is pre-installed on crank). Tighten the Crank Bolt M17 ⑦ to 450-550 kgf.cm / 45-55 Nm / 395-485 in.lbs.
- CAUTION** Do not tighten M17 crank bolt over 550 kgf.cm / 55 Nm / 485 in.lbs. torque. Try to avoid completely flattening the wave spring washer ⑥. Clearance between non-drive arm and bearing shield 1.5 ~ 2.2mm.

### Contact

If you have questions, please visit our web site technical section: <http://www.fullspeedahead.com/contact> or contact:

Full Speed Ahead, USA  
12212 Cyrus Way Mukilteo, WA 98275-5702  
Tel: 1\_425\_488\_8653 Fax: 1\_425\_489\_1082

Full Speed Ahead, Europe  
Via Del Lavoro, 56 20874 Busnago, Milan, Italy  
Tel: +39\_039\_688\_5265 Fax: +39\_039\_682\_3336

TH INDUSTRIES / FSA Asia  
NO.6, Wu-gong 8th Rd., Wufeng Dist., Taichung City 41353, Taiwan (R.O.C.)  
Tel: +886\_4\_2331\_9134 Fax: +886\_4\_2331\_9314

Notes: Specifications of product may be changed or improved for performance. Please refer to website periodically for technical updates and revised instructions. Printed in Taiwan.